

— specification & parameters

1、Working device

Diameter of drill hole	$\phi 1000 \sim \phi 2100 \text{mm}$
Rotary torque	3081/1821/1030kN·m instant 3510kN·m
Rotary speed	1.3/2.2/3.6rpm
Rotary motor model	M3B530AP
Lower pressure of sleeve	Max 600kN
Pulling force of sleeve	3760kN instant 4300kN
Pressure-pulling stroke	750mm
weight	46000Kg

2、Hydraulic power station

engine model	Volvo TAD1152VE-C388
engine rated power	285kW (1700r/min)
engine Max.torque	1938N·m/(1260rpm)
emission standard	National III(optional National IV)
hydraulic system pressure	35 MPa
Hydraulic pump output (Main circuit & auxiliary circuit)	$2 \times 200 \text{cm}^3 + 1 \times 95 \text{cm}^3$
hydraulic tank volume	860 L
weight	8000kg
control model	Standard wired remote control Optional wireless remote control

3、Electrical System

The system voltage is 24 volts, equipped with a controller, wireless remote control, GPS, standard mode and emergency mode switching switch, power master switch, etc. For the construction process, CAN bus control technology, integrated circuit technology and CAN bus virtual instrument technology, and automatic real-time detection and display; PLC control system can be adjusted automatically / manually adjusted Platform level, platform level is displayed in "ten" graphics and value. Drilling accuracy can reach more than 1 / 500; with engine operation information monitoring, rotary torque and pressure state monitoring, engine water temperature alarm, filter alarm, low hydraulic oil level alarm, maintenance tips and pressure state monitoring, engine water temperature alarm, filter alarm, low hydraulic oil level alarm, maintenance tips, and other safety alarm and prompt information, to maximize the protection of man-machine safety.

三 . Functional configuration table

standard configuration●, selective configuration○:

Pressure& Pulling force display	●	High engine water temperature alarm	●
Oil pressure detection	●	Filter blocking alarm	●
Fuel self-suction pump	●	Low hydraulic oil level alarm	●
GPS	●	Engine information monitoring	●
PLC intelligent control module	●	Knife head load protection	●
Intelligent fault detection	●	Rotary torque display	●
Platform manual / automatic level adjustment	●	Platform level monitoring	○

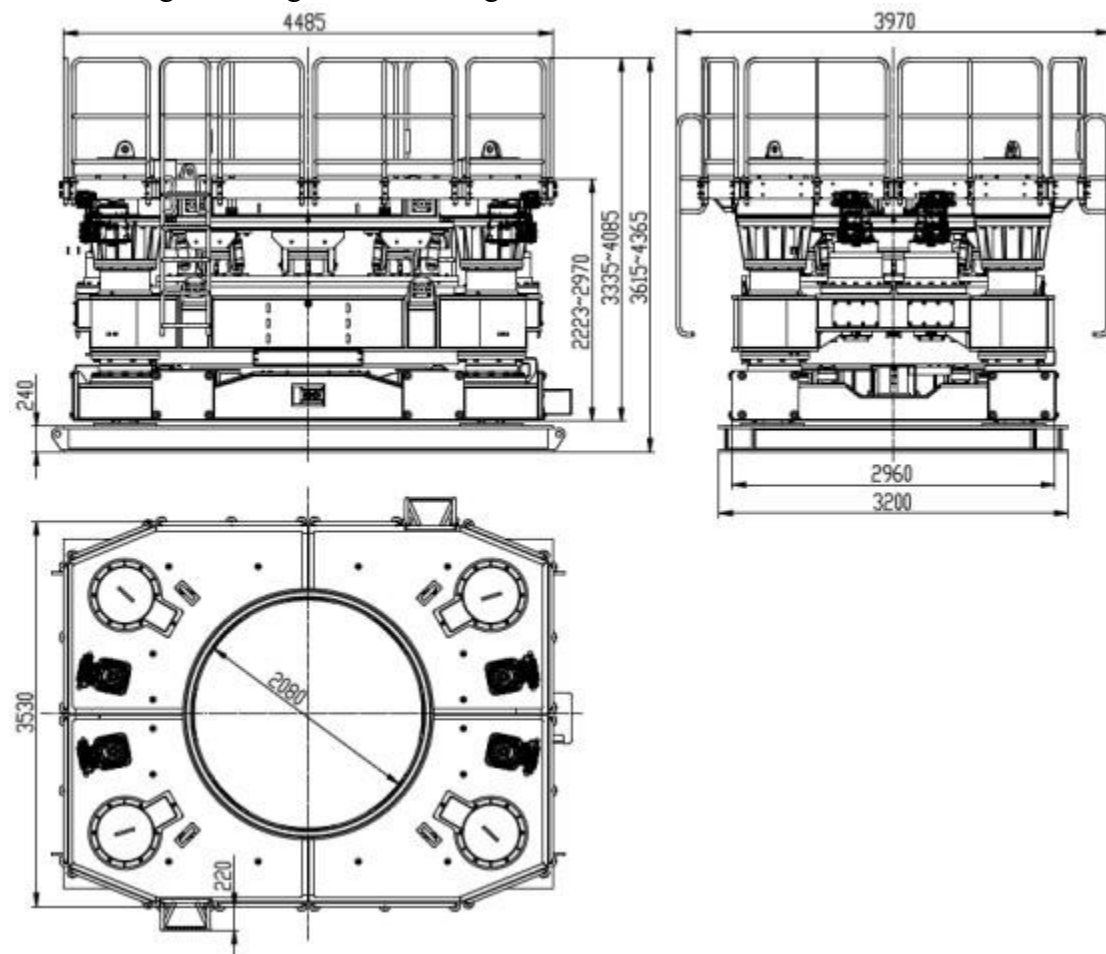
四 List of major components configuration

supporting manufacturers of rotator components and parts

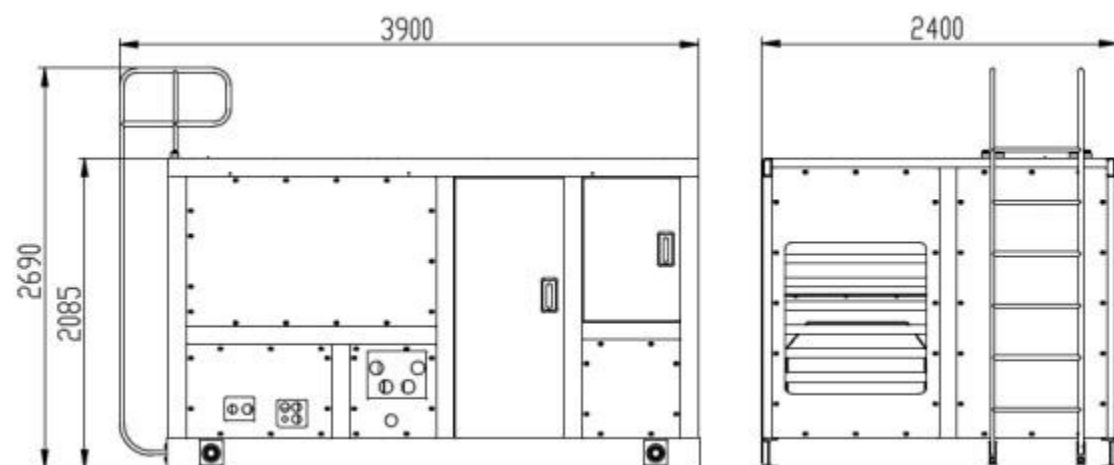
components and parts;	brand
engine	Volvo
Hydraulic main pump	Rexroth
Hydraulic main valve	AMCA
hydrocylinder	XCMG
rotator motor	Kawasaki
Rotary reducer	Chinese brand
controller	wika
display	wika
telecontroller	Chinese brand

五 size & weight

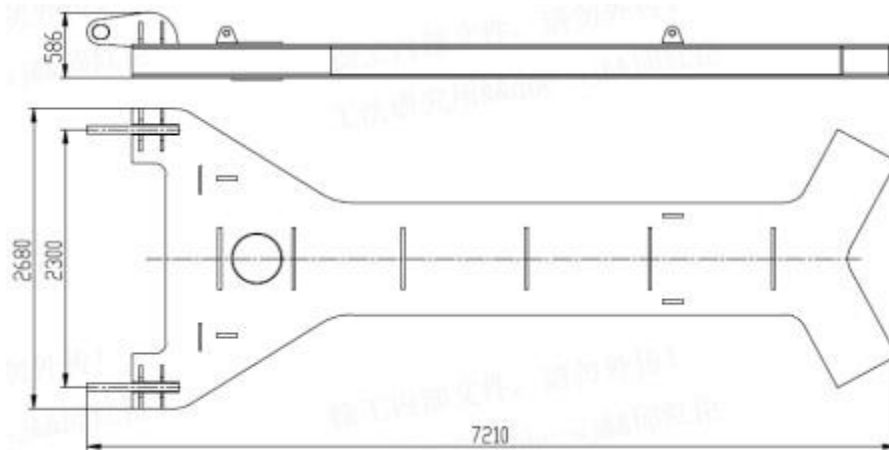
1、Working unit weight is 46,000 Kg



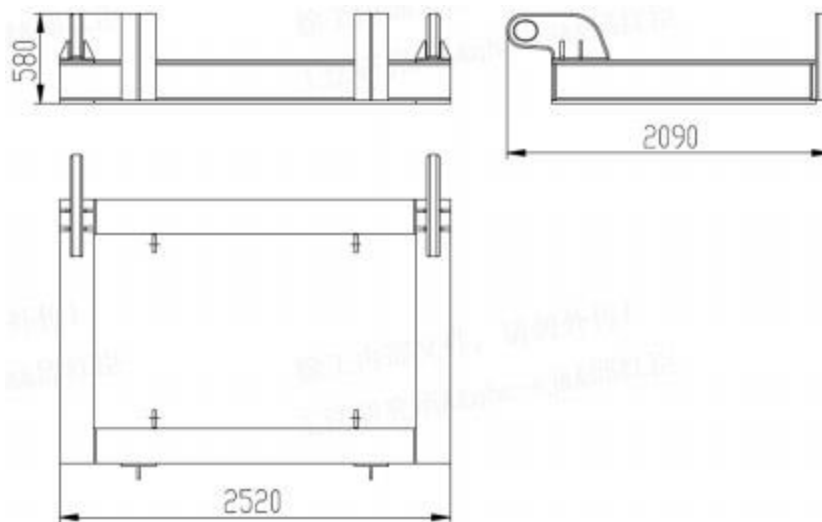
2、Hydraulic power station weight is 7,500 Kg



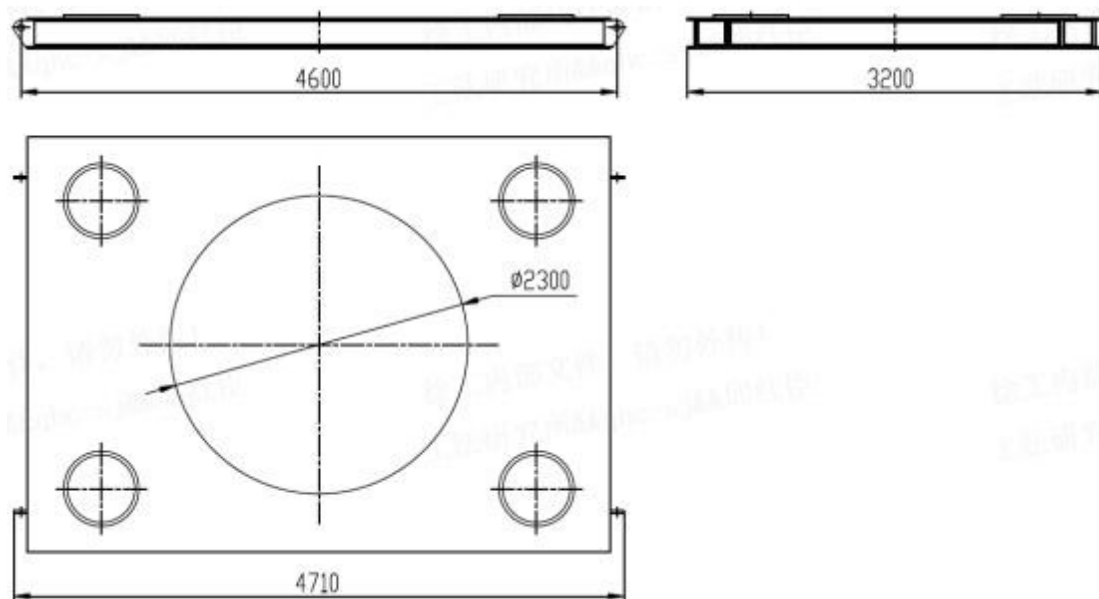
3、 Reverse force fork weight is 4,215 K g



4、 The rack weight is 1335Kg

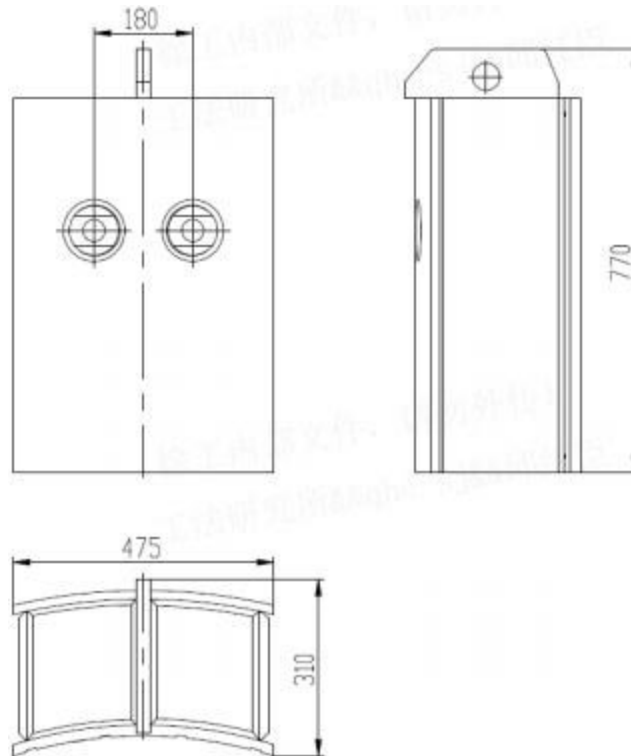


5、 Road substrate weight is 4,830 K g

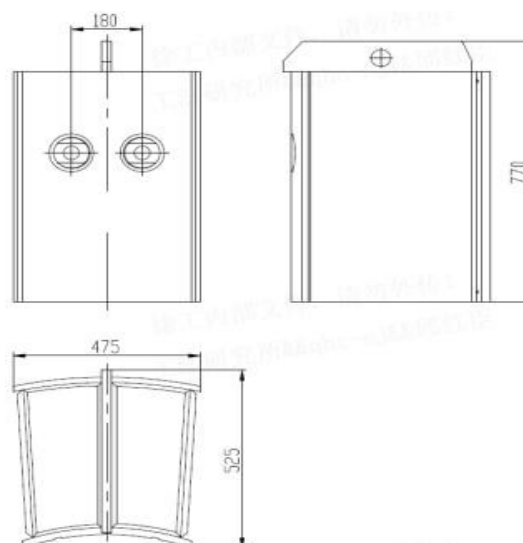


6、 Main Variable-diameter block

The main variable diameter block $\phi 2100\text{mm}$ variable $\phi 1600\text{mm}$ total 8 pieces, single weight 200Kg

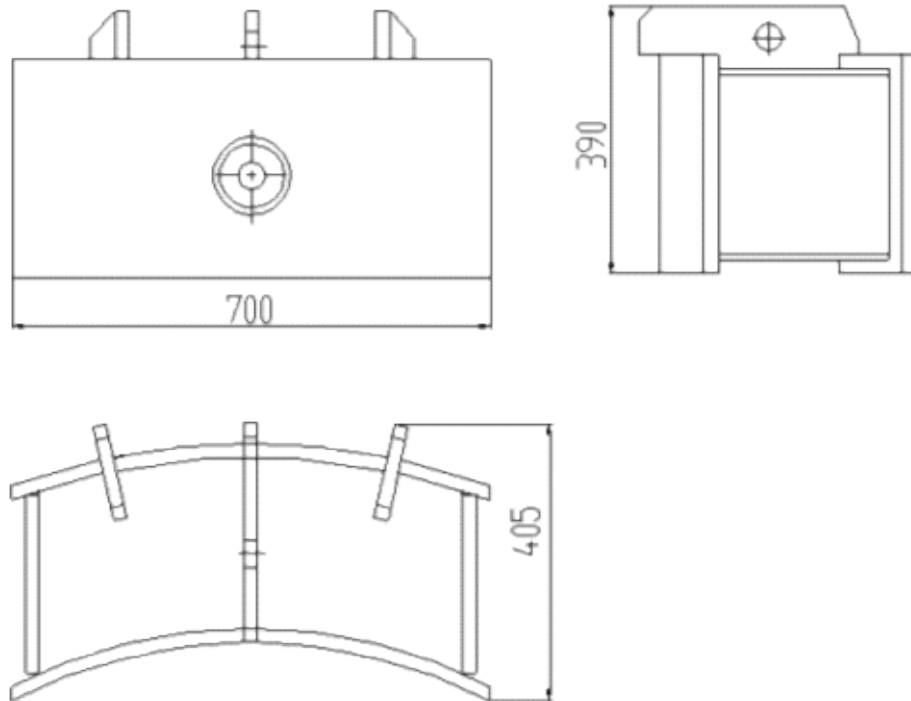


The main variable diameter block $\phi 2100\text{mm}$ variable $\phi 1600\text{mm}$ total 8 pieces, single weight 200Kg

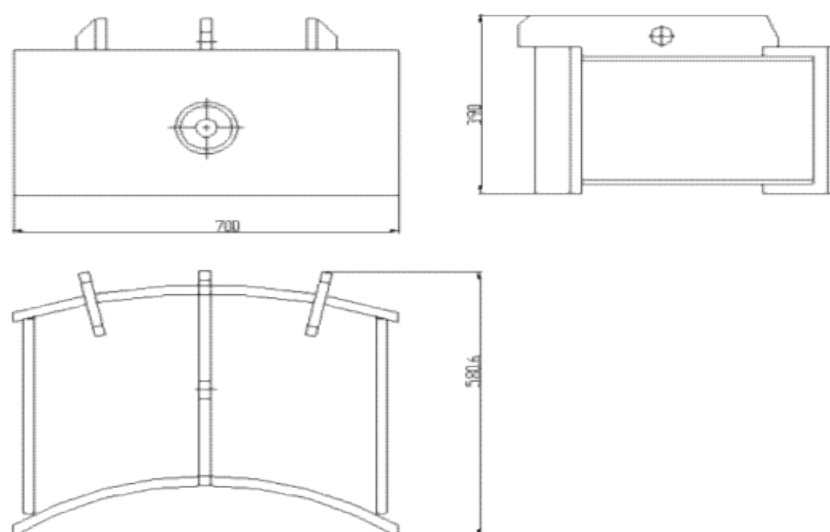


7、 Secondary variable diameter block

Side variable diameter block $\phi 2100\text{mm}$ variable $\phi 1600\text{mm}$ a total of 8 pieces, a single weight of 155Kg



Side variable diameter block $\phi 2100\text{mm}$ variable $\phi 1200\text{mm}$ a total of 8 pieces, a single weight of 205 kg.



六、 Technical documents with the car

Brand casing rotator is shipped with the car packing list, including the following technical documents:

Product qualification certificate

Product instructions

The Engine Service and Maintenance Manual

Instructions for speed reducer Box list (including a list of vulnerable parts and spare parts, list of vehicle tools, list of transportation parts)